

Airport Construction Update Week of August 6, 2007

Closure of West Entrance to Terminal C Short-term Parking

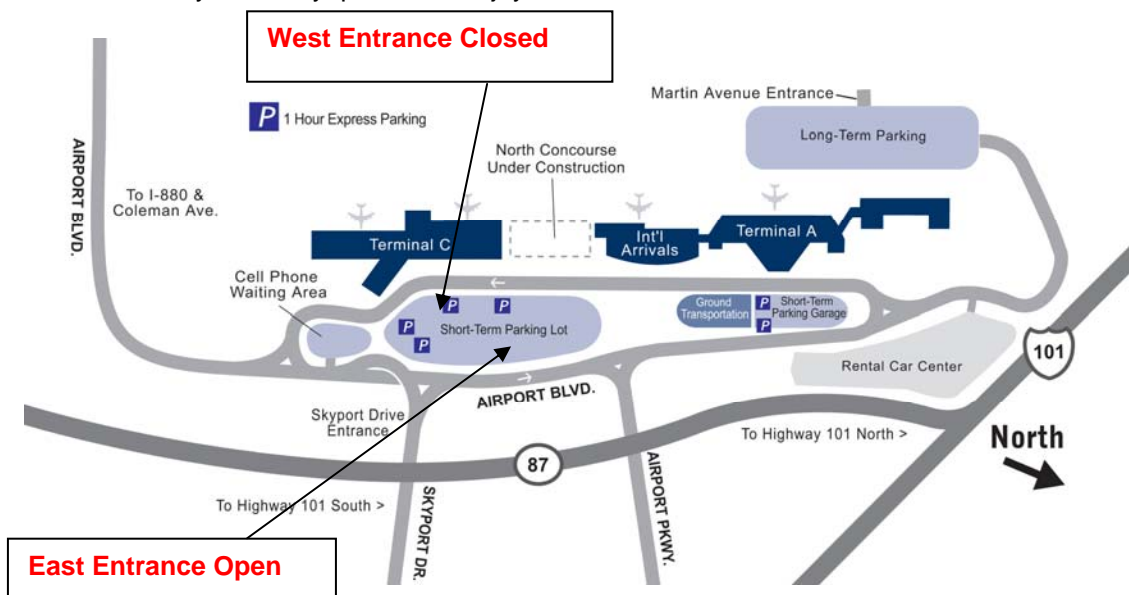
The West entrance to the Terminal C Short-term Parking Lot is now closed. Vehicles can enter the lot using the East entrance located just north of Skyport Drive. See map below.

Watch for Gate Changes at Terminal C

Over the next month or so, our construction will require airlines at Terminal C to relocate their usual gates from time to time. Travelers need to be alert to gate changes and allow a few more minutes in your travel plans.

Southern Crosswalk from Terminal C to Short-term Parking Closed

Road construction has required us to close the crosswalk in front of Terminal C. Please look for signs that direct travelers to other crosswalks, and for your safety, please don't jaywalk.



Cell Phone Waiting Lot to Close August 13

Because of roadway construction, we will close the cell phone waiting area on Monday, August 13. We're looking for alternative locations that can provide suitable convenience near the Airport during construction over the next three years.

Upcoming New Airport Community Meetings

The Airport will be conducting community meetings in numerous neighborhoods to discuss the New Airport, its many customer amenities, construction impacts and more. To find a meeting near you, go to www.flysanjose.com/CommunitySevices/Neighborhoodservices. Also, watch for our ads in your local community newspaper.

Airport Construction Update is produced by the Marketing and Communication Division at Norman Y. Mineta San José International Airport. We welcome your comments. If you're not already on the mailing list for this publication, you can subscribe now. Just [click here](#).